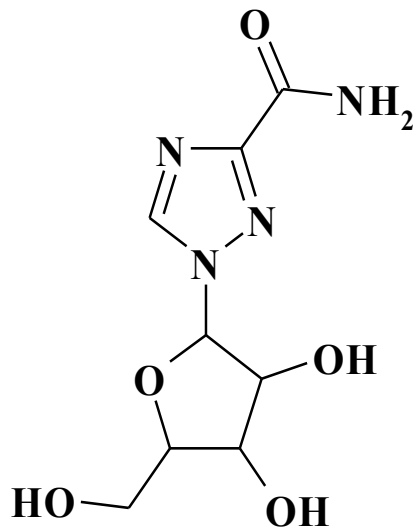
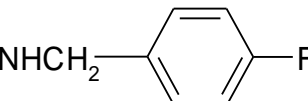
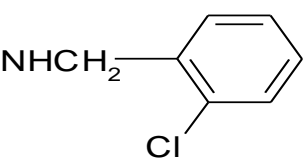
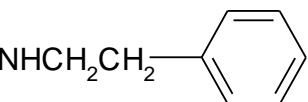
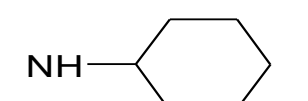
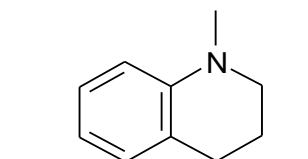
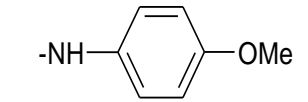
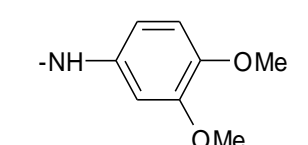


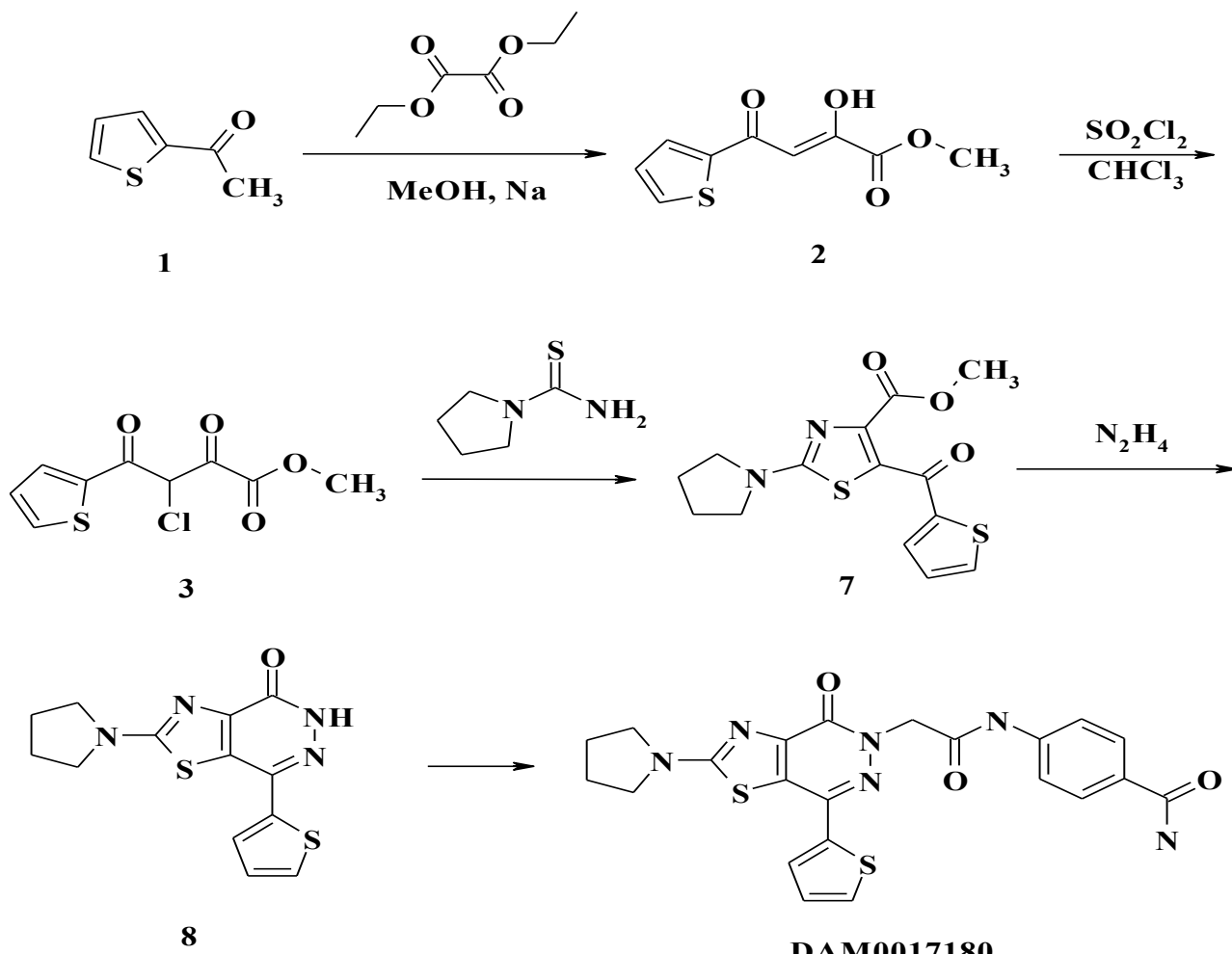
***“Пошук противірусних та
протиухлинних препаратів in
vitro”***





<i>Virus</i>		<i>Unit</i>	<i>EC50</i>	<i>IC50</i>	<i>Si</i>
<i>Flu A (H1N1)</i>	<i>Ribavirin</i>	<i>ug/ml</i>	8.7	>320	>37
<i>Flu A (H3N2)</i>	<i>Ribavirin</i>	<i>ug/ml</i>	6.7	>320	>48
<i>Flu A (H5N1)</i>	<i>Ribavirin</i>	<i>µg/ml</i>	10	>320	>32
<i>Flu B</i>	<i>Ribavirin</i>	<i>µg/ml</i>	10	>320	>32
<i>SARS</i>	<i>M128533</i>	<i>µg/ml</i>	0.44	>100	>230

<i>R</i>	<i>Virus</i>	<i>Strain</i>	<i>Unit</i>	<i>EC50</i>	<i>IC50</i>	<i>Si</i>
-NH ₂	<i>Flu A (H5N1)</i>	<i>Vietnam/1203/2004H</i>	μg/ml	36	>100	>2.8
	<i>Flu A (H5N1)</i>	<i>Vietnam/1203/2004H</i>	μg/ml	31	>100	>3.2
	<i>Flu A (H5N1)</i>	<i>Vietnam/1203/2004H</i>	μg/ml	27	>100	>3.7
	<i>Flu A (H5N1)</i>	<i>Vietnam/1203/2004H</i>	μg/ml	21	>100	>4.8
	<i>Flu A (H5N1)</i>	<i>Vietnam/1203/2004H</i>	μg/ml	33	67	2
	<i>Flu A (H5N1)</i>	<i>Vietnam/1203/2004H</i>	μg/ml	31	>100	>3.2
	<i>Flu A (H5N1)</i>	<i>Vietnam/1203/2004H</i>	μg/ml	13	>100	>8
	<i>Flu A (H5N1)</i>	<i>Vietnam/1203/2004H</i>	μg/ml	12	>100	>8.3



	<i>Virus</i>	<i>Strain</i>	<i>Unit</i>	<i>EC50</i>	<i>IC50</i>	<i>Si</i>
<i>DAM</i> <i>1718</i> <i>0</i>	<i>Flu A (H1N1)</i>	<i>California/07/2009</i>	<i>ug/ml</i>	<i>61</i>	<i>>100</i>	<i>>1.6</i>
	<i>Flu A (H3N2)</i>	<i>Brisbane/10/2007</i>	<i>ug/ml</i>	<i>83</i>	<i>>100</i>	<i>>1.2</i>
	<i>Flu A (H5N1)</i>	<i>Vietnam/1203/2004H</i>	<i>μg/ml</i>	<i>30</i>	<i>>100</i>	<i>>3.3</i>
	<i>Flu B</i>	<i>Florida/4/2006</i>	<i>μg/ml</i>	<i>37</i>	<i>>100</i>	<i>>2.7</i>
	<i>SARS</i>	<i>Urbani</i>	<i>μg/ml</i>	<i>47</i>	<i>>100</i>	<i>>2.1</i>

HCoV-EMC

Compound	Visual Assay			NRAssay		
	EC50	IC50	SI	EC50	IC50	SI
11-001455	15	>100	>6.7	30	>100	>3.3
10-001660	0.87	9.3	11	0.48	16	33
10-001778	4.9	>100	>20	3.3	>100	>30
10-001648	0.48	>100	>210	0.33	>100	>300
10-001599	0.68	32	47	0.51	37	73
10-001602	0.56	6.8	12	0.32	8.5	27
10-001585	0.68	>100	>150	0.32	>100	>310
10-001576	0.42	4.2	10	0.3	3.9	13
10-001573	0.87	>100	>110	0.49	>100	>200
09-101464	0.87	>100	>100	0.28	>100	>360
09-101463	1.8	32	18	1.6	39	24
09-101462	1.2	32	27	0.33	62	190
09-101459	0.68	>100	>150	0.49	>100	>200
09-101451	3.2	>100	>31	2.1	>100	>48
09-101444	3.2	>100	>31	2.8	>100	>36

Developmental Therapeutics Program

NSC: D-753270 / 1

Conc: 1.00E-5 Molar

Test Date: Jun 01, 2010

One Dose Mean Graph

Experiment ID: 1006OS66

Report Date: May 02, 2011

Panel/Cell Line

Growth Percent

Mean Growth Percent - Growth Percent

Leukemia

CCRF-CEM	11.08
HL-60(TB)	-1.56
K-562	10.27
MOLT-4	21.17
RPMI-8226	17.18
SR	26.07

Non-Small Cell Lung Cancer

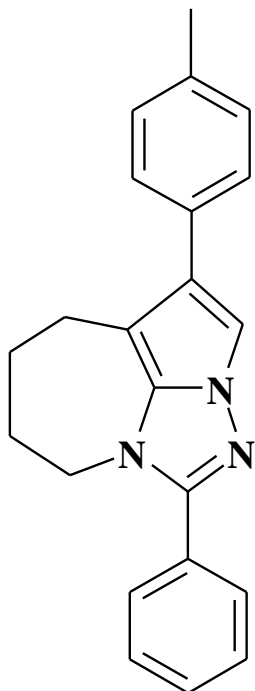
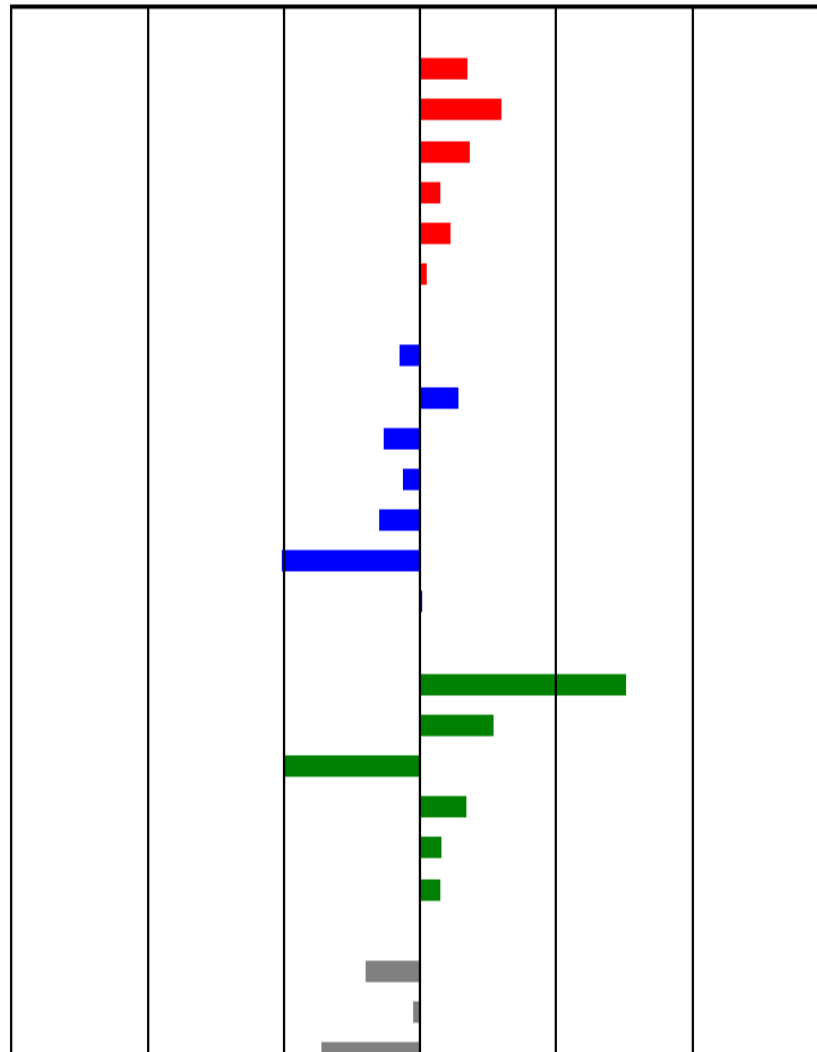
A549/ATCC	35.01
EKVX	14.35
HOP-62	40.83
NCI-H226	34.02
NCI-H23	42.46
NCI-H322M	78.19
NCI-H460	27.87

Colon Cancer

COLO 205	-47.03
HCT-116	1.59
HCT-15	77.51
HT29	11.54
KM12	20.71
SW-620	21.23

CNS Cancer

SF-268	47.78
SF-295	30.01
SF-530	62.60



Leukemia	
CCRF-CEM	7.92
HL-60(TB)	54.77
K-562	14.22
MOLT-4	18.37
RPMI-8226	52.80
SR	63.13
Non-Small Cell Lung Cancer	
A549/ATCC	80.91
EKVX	71.73
HOP-62	101.90
HOP-92	55.50
NCI-H226	65.61
NCI-H23	77.88
NCI-H322M	75.08
NCI-H460	89.27
NCI-H522	66.45
Colon Cancer	
COLO 205	61.01
HCC-2998	92.17
HCT-116	38.87
HCT-15	88.29
HT29	27.81
KM12	71.64
SW-620	80.27
CNS Cancer	
SF-268	92.81
SF-295	65.29
SF-539	101.54
SNB-19	91.71
SNB-75	78.58
U251	69.33
Melanoma	
LOX IMVI	56.22

